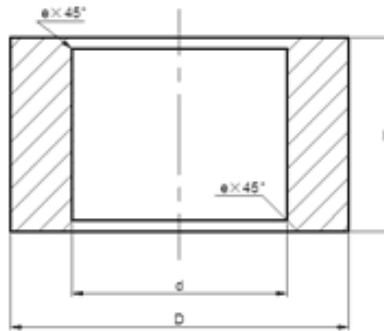




### Cemented Carbide Gauge Block-Type LS



Unit: mm

Type	D	d	H	e	
CTC-SLS060304	6.6	3.5	4.0	-	
CTC-SLS060306			6.0		
CTC-SLS060308			8.0		
CTC-SLS070304	7.6		4.0		
CTC-SLS070306			6.0		
CTC-SLS070308			8.0		
CTC-SLS080504	8.6	5.0	4.0	-	
CTC-SLS080506			6.0		
CTC-SLS080510			10.0		
CTC-SLS090504	9.6		4.0		0.4
CTC-SLS090506			6.0		
CTC-SLS090510			10.0		
CTC-SLS100604	10.8	6.0	4.0	0.4	
CTC-SLS100606			6.0		
CTC-SLS100610			10.0		
CTC-SLS110605	11.8		5.0		0.4
CTC-SLS110606			6.0		
CTC-SLS110610			10.0		
CTC-SLS120805	12.8	8.0	5.0	0.4	
CTC-SLS120806			6.0		
CTC-SLS120810			10.0		
CTC-SLS130805	13.8		5.0		0.4
CTC-SLS130806			6.0		
CTC-SLS130810			10.0		
CTC-SLS140805	14.8	5.0	0.4		
CTC-SLS140806		6.0			
CTC-SLS140810		10.0			
CTC-SLS150806	15.8	6.0		0.4	
CTC-SLS150808		8.0			
CTC-SLS150812		12.0			



Continued

Unit: mm

Type	D	d	H	e
CTC-SLS161006	16.8	10.0	6.0	0.8
CTC-SLS161008			8.0	
CTC-SLS161012			12.0	
CTC-SLS171006	17.8		6.0	
CTC-SLS171008			8.0	
CTC-SLS171012			12.0	
CTC-SLS181306	18.8	13.0	6.0	
CTC-SLS181308			8.0	
CTC-SLS181312			12.0	
CTC-SLS191306	19.8		6.0	
CTC-SLS191308			8.0	
CTC-SLS191312			12.0	
CTC-SLS201506	20.8	15.0	6.0	
CTC-SLS201508			8.0	
CTC-SLS201512			12.0	
CTC-SLS211506	21.8		6.0	
CTC-SLS211508			8.0	
CTC-SLS211512			12.0	
CTC-SLS221706	22.8	17.0	5.0	
CTC-SLS221708			6.0	
CTC-SLS221712			10.0	
CTC-SLS231706	23.8		6.0	
CTC-SLS231708			8.0	
CTC-SLS231712			12.0	
CTC-SLS241706	24.8	18.0	6.0	
CTC-SLS241808			8.0	
CTC-SLS241812			12.0	
CTC-SLS251808	25.8		8.0	
CTC-SLS251810			10.0	
CTC-SLS251816			16.0	
CTC-SLS262008	26.8	20.0	8.0	
CTC-SLS262010			10.0	
CTC-SLS262016			16.0	
CTC-SLS282008	28.8		8.0	
CTC-SLS282010			10.0	
CTC-SLS282016			16.0	
CTC-SLS302408	30.8	24.0	8.0	
CTC-SLS302410			10.0	
CTC-SLS302412			12.0	
CTC-SLS302416			16.0	



Continued

Unit: mm

Type	D	d	H	e	
CTC-SLS322508	32.8	25.0	8.0	1.2	
CTC-SLS322512			12.0		
CTC-SLS322516			16.0		
CTC-SLS322520			20.0		
CTC-SLS342508	34.8		8.0		
CTC-SLS342512			12.0		
CTC-SLS342516			16.0		
CTC-SLS342520			20.0		
CTC-SLS352608	35.8	26.0	8.0		
CTC-SLS352612			12.0		
CTC-SLS352616			16.0		
CTC-SLS352620			20.0		
CTC-SLS372808	37.8		28.0		8.0
CTC-SLS372812					12.0
CTC-SLS372816					16.0
CTC-SLS372820					20.0
CTC-SLS382808	38.8	8.0			
CTC-SLS382812		12.0			
CTC-SLS382816		16.0			
CTC-SLS382820		20.0			
CTC-SLS393012	39.8	30.0	12.0		
CTC-SLS393016			16.0		
CTC-SLS393020			20.0		
CTC-SLS393025			25.0		
CTC-SLS403212	40.8		32.0	12.0	
CTC-SLS403216				16.0	
CTC-SLS403220				20.0	
CTC-SLS403225				25.0	
CTC-SLS423212	42.8	12.0			
CTC-SLS423216		16.0			
CTC-SLS423220		20.0			
CTC-SLS423225		25.0			

Tolerance: D: 0~+0.8; d、H: ±0.50